

MOVING YOU FURTHER



■ Some of the photos may include optional equipment.

HYUNDAI LPG FORKLIFT TRUCKS **Applied Tier 4 Engine**

70L-7A



North American Headquarters
6100 Atlantic Blvd, Norcross, GA 30071
TEL (678) 823 7777 FAX (687) 823 7778

PLEASE CONTACT

www.hyundaiforkliftamericas.com

2018. 07 Rev. 5



MEMO

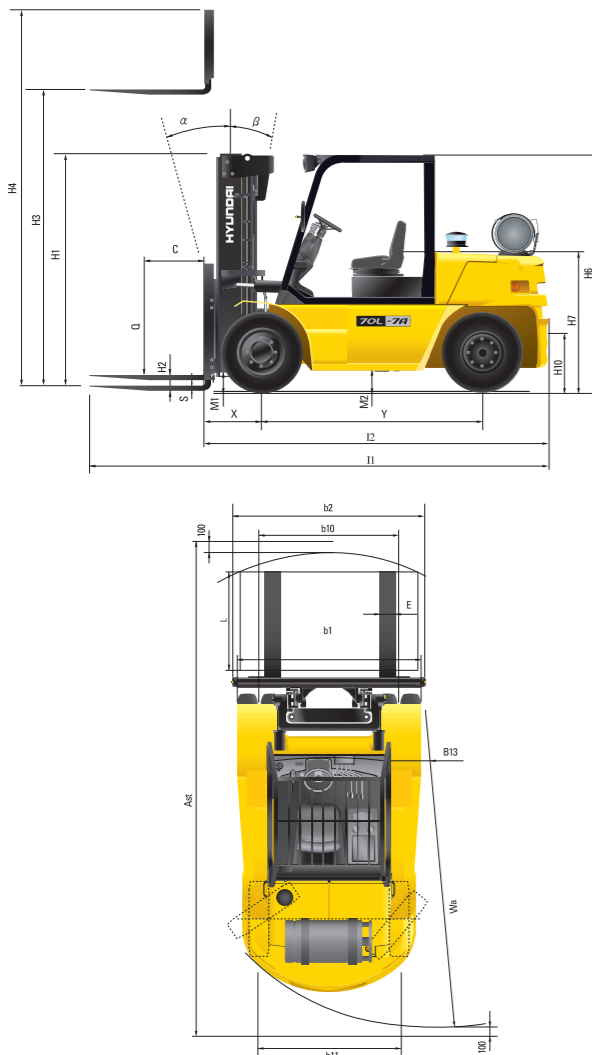
■ Some of the photos may include optional equipment.

Optional Items

- **FORK (mm)** : 1200, 1350, 1500, 1800, 2000, 2300, 2400
- **TIRE** : SOLID (SUPERELASTIC), NON-MARKING
- **INTERNAL PIPING**
- **CABIN WITH HEATER**
- **MUFFLER** : HORIZONTAL
- **LPG TANK CLAMP** : DUAL
- **STROBE LIGHT** : (AMBER, RED, BLUE)
- **HAZARD SWITCH**
- **M.C.V.** : 4-SPOOL
- **SIDE SHIFT**
- **INTEGRAL FORK POSITIONER CARRIAGE**
- **INTEGRAL SIDE SHIFT CARRIAGE**
- **INTEGRAL S/S WITH F/P CARRIAGE**

※ The options in this brochure are subject to change to improve the performance of the forklift.

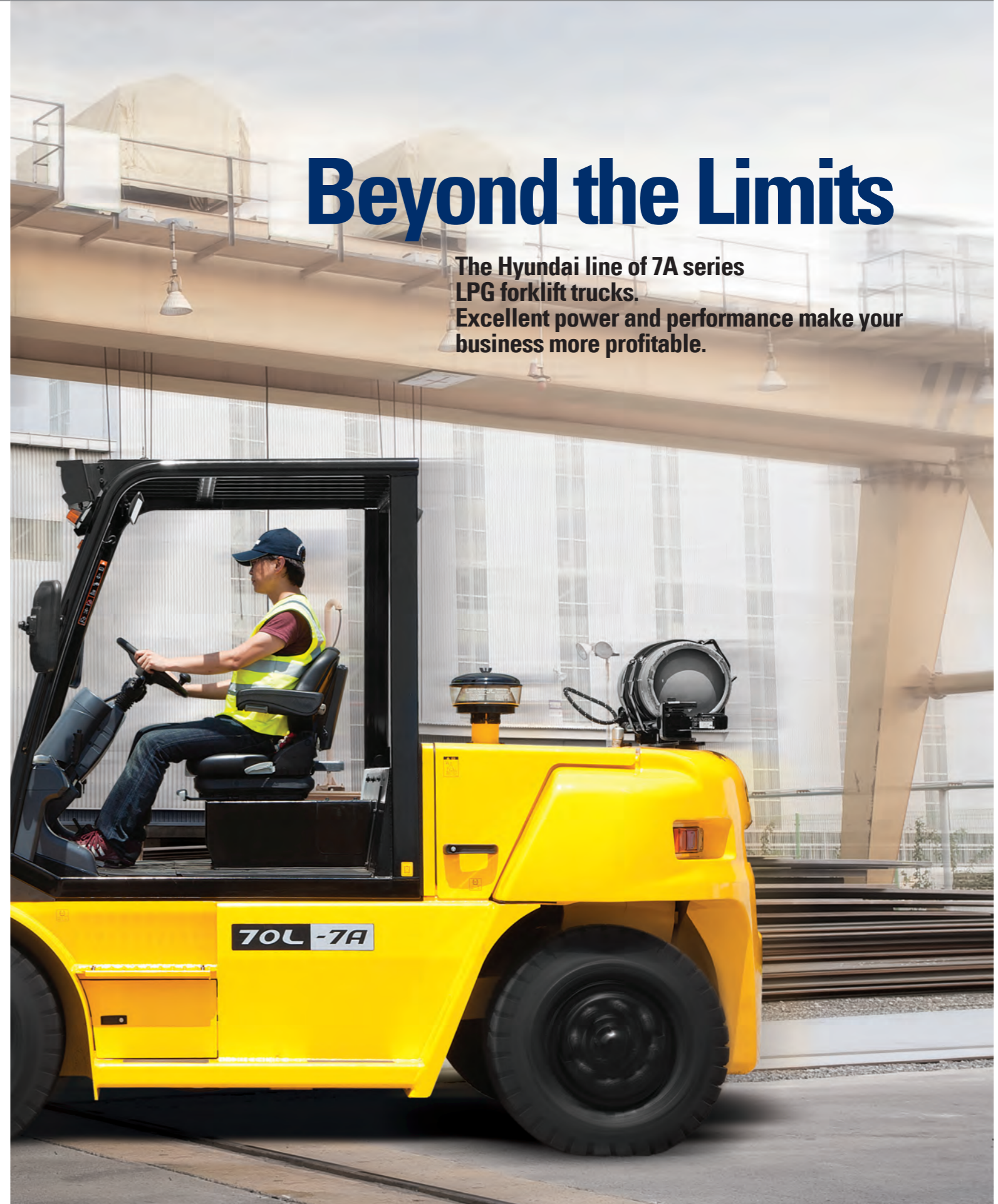
Dimension



Specification

Identification		
1.1	Manufacturer	Hyundai
1.2	Manufacturer's type designation	70L-7A
1.3	Drive: electric (battery or mains), diesel, petrol, fuel gas, manual	LP
1.4	Type of operation: hand, pedestrian, standing, seated, order-picker	seated
1.5	Load capacity / rated load	Q (lb) 15,500
1.6	Load center distance	c (in) 24
1.8	Load distance, center of drive axle to fork	x (in) 24.2
1.9	Wheelbase	y (in) 90.6
Weights		
2.1	Service weight	lb 20,790
2.2	Axle loading, loaded front/rear	lb 32,108 / 4,114
2.3	Axle loading, unloaded front/rear	lb 8525 / 12,266
Wheels, Chassis		
3.1	Tires: solid rubber, superplastic, pneumatic, polyurethane	Pneumatic
3.2	Tires size, front	8.25-15-14PR
3.3	Tires size, rear	8.25-15-14PR
3.5	Wheels, number front x rear (x=driven wheels)	4x2
3.6	Track width, front	b10 (in) 62.1
3.7	Track width, rear	b11 (in) 63.1
Basic Dimensions		
4.1	Mast/fork carriage tilt forward / backward (α/β)	degrees 15 / 10
4.2	Lowered mast height	h1 (in) 99.0
4.3	Free lift	h2 (in) 5.5
4.4	Lift height	h3 (in) 119.3
4.5	Extended mast height	h4 (in) 170.1
4.7	Overhead guard (cab) height	h5 (in) 99.4
4.8	Seat height / standing height	h7 (in) 54.9
4.12	Coupling height	h10 (in) 16.7
4.19	Overall length	l1 (in) 189.8
4.20	Length to face of forks	l2 (in) 142.5
4.21	Overall width	b1 (in) 82.2
4.22	Fork dimensions	s / e / l (in) 2.6 x 5.9 x 48
4.23	Fork carriage ISO 2328, class / type A, B	Class IV
4.24	Fork-carriage width	b12 (in) 78.3"
4.31	Ground clearance, loaded, under mast	m1 (in) 7.7
4.32	Ground clearance, centre of wheelbase	m2 (in) 8.7
4.33	Aisle width for pallets 1000x1200 crossways	Ast (in) 204.1
4.34	Aisle width for pallets 800x1200 lengthways	Ast (in) 212
4.35	Turning radius	Wa (in) 132.7
4.36	Smallest pivot point distance	b13 (in) 48.2
Performance Data		
5.1	Travel speed, Unloaded	mph 13.9
5.2	Lift speed, Loaded/Unloaded	in/s 16.5 / 16.9
5.3	Lowering speed, Loaded/Unloaded	in/s 19.7 / 17.7
5.5	Drawbar pull, Loaded	lb 15,126
5.7	Gradient performance, Loaded	% 40.6
5.10	Service brake	Hydraulic Wet Brake
Engine		
6.1	Engine manufacturer / type	PSI 4.3L V6
6.2	Engine power acc. to ISO 1585	hp 105
6.3	Rated speed	1/min 2,300
6.4	No. of cylinder / cubic capacity	/cm3 6 / 4,294
Other Details		
8.2	Type of drive control	Power Shift
8.3	Operating pressure	bar 185
8.4	Oil volume(system)	ℓ 94
8.5	Noise	db(A) 82

※ The specifications in this brochure are subject to change for option.



Beyond the Limits

The Hyundai line of 7A series LPG forklift trucks. Excellent power and performance make your business more profitable.

The new master on the job-site!

Smooth running, efficient and ergonomically designed, 70L-7A series are made to meet your needs.

105hp/2,300rpm

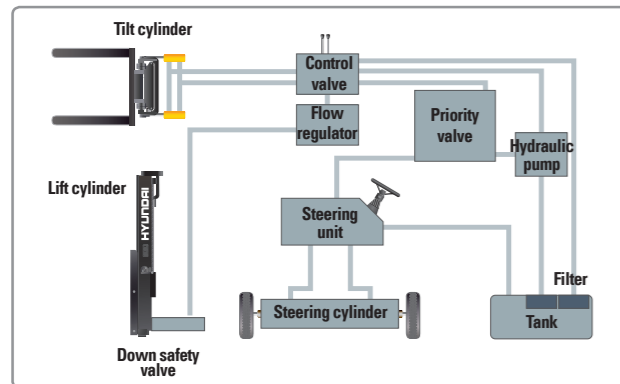


**Powerful Engine
PSI 4.3L V6 Engine**

Industry proven quality of PSI 4.3L V6 engine ensures incomparable performance, durability and additional value to the machine. Powerful and efficient engine provides excellent fuel consumption and torque. (EPA/CARB Tier-IV Certified)

Fast and Stable Performance

Being able to quickly raise and lower the mast, as well as tilt forward and backward, provides the best operational conditions during unloading. When the truck is fully loaded, mast lowering speed is carefully controlled to ensure safety by the down control valve. Mast(Lift and Tilt) Look System is standard.



State-of-the-art Hydraulic System

The latest large-capacity hydraulic system reacts quickly during operation, and a low-noise control valve increases both efficiency and durability.

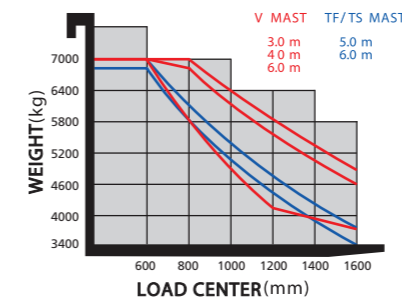


Fully Hydrostatic Power Steering

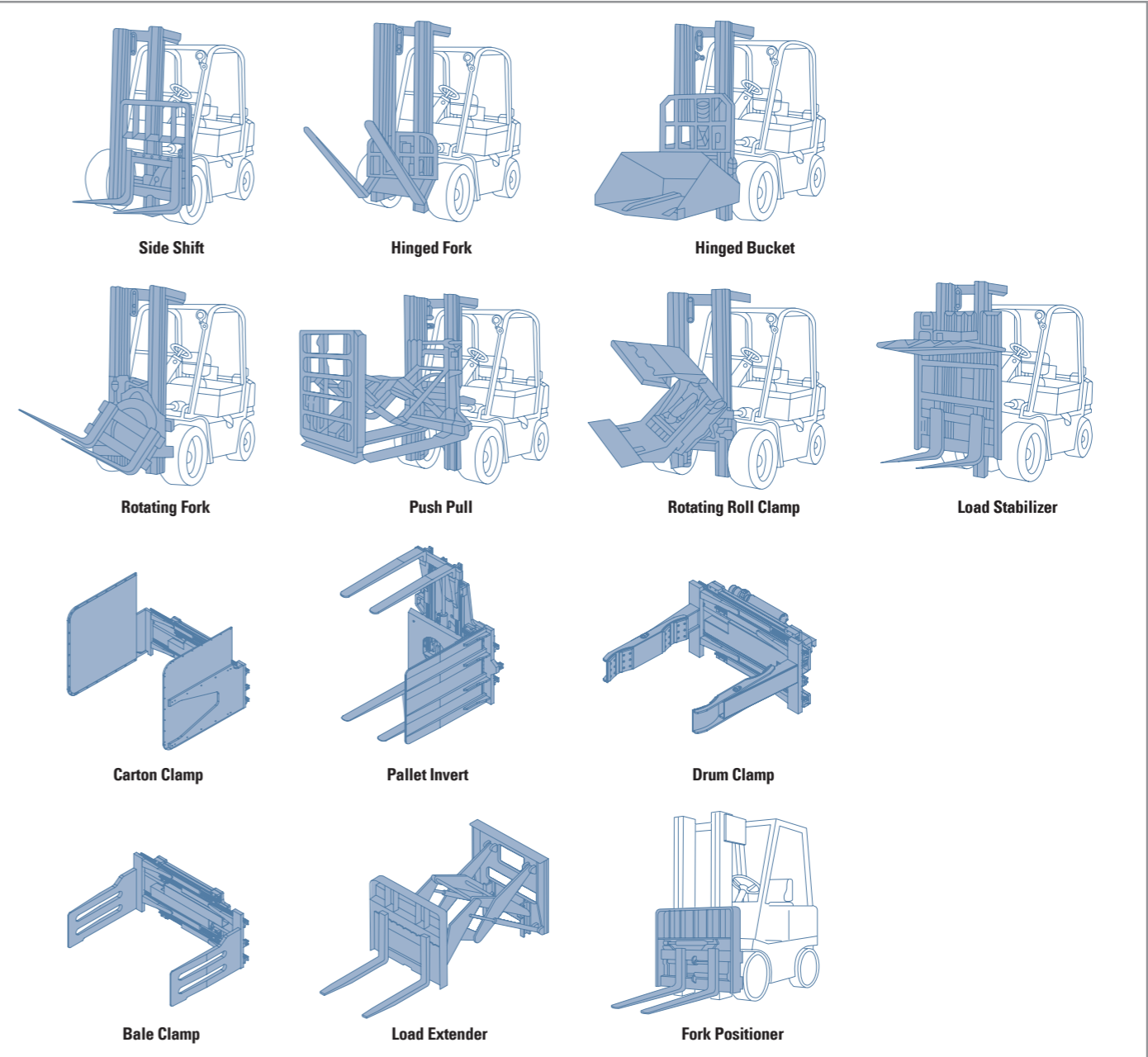
A hydraulic steering system always guarantees smooth and flexible steering, preventing overrun and kick-back.

Load Capacity

70L-7A



Various Attachments



Ergonomic operator friendly compartment design!

Based on the mechanics of the human frame, Hyundai operator compartments are ergonomically designed to help reduce fatigue and increase operator efficiency.

Operator Friendly Gauges and Water-resistant Monitor Panel



- ① Parking brake lamp
- ② Turn Indicator
- ③ Engine oil warning lamp
- ④ Transmission oil temperature warning lamp
- ⑤ Battery charging warning lamp
- ⑥ Air filter warning lamp
- ⑦ Working light indicator
- ⑧ Seat belt warning
- ⑨ Water temperature gauge
- ⑩ DPSS Warning
- ⑪ Hour meter
- ⑫ Check engine lamp
- ⑬ Brake oil warning lamp



Grammer Full Suspension Seat
Easily adjustable premium suspension seat, provides great comfort, safety and durability.



Some of the photos may include optional equipment.



Excellent Visibility for Safe Operation
The cabin was designed for more space, a wider field of view and operator comfort.



Ergonomically Positioned Pedals
The accelerator, brake and inching pedals are positioned to optimize foot comfort to the operator while operating the equipment.



Convenience Tray
Provides additional storage spaces, paperwork clamp and cup holder.



Quick Response of Operating Control Levers
Minimal operator effort is required for precise, safe and productive control.



Maintenance Free Battery



Large Tool Box
Additional tool box located in machine side for operator's convenience.



Easy-to-access Reservoir Tank



Locking Engine Compartment Cover

Designed for quick and easy service!

An ideal arrangement of component parts ensures easy access and convenience for maintenance.



Large Engine Hood

Highly accessible engine compartment assures fast and efficient maintenance.



Easy Change Air Cleaner

The air filter is readily accessible for cleaning or replacement.



Efficient Cooling System



■ Some of the photos may include optional equipment.



Brake Fluid Reservoir with Level Switch

When brake oil level became lower than Min., the warning lamp on the cluster lights on.



Easy Maintenance Oil Check

The T/M oil level can be checked easily without any disassembly.



Expansion Bellows

The expansion bellows absorbs vibration and reduces noise generated from the exhaust system and also extends the life cycle of exhaust system.



Grease Fittings

Grease fittings are installed for fast access to steering axle center pin when doing your service checks.



Adjustable Steering Wheel

Steering wheel with horn button can be adjusted by a lever on the right-hand side for the most comfortable operator position.



Easy and Safe Shift Lever

A single lever on the left side of the steering column gives the operator fast, easy control of direction. The lever must be in the neutral position before the engine can be started.

Danger-free through high durability!

Safety and durability are priorities in design of the equipment.



Strong Overhead Guard

The safety overhead guard meets ISO 6055 regulation and protects the operator during hazardous jobs.



Parking brake

Ratchet type parking brake requires less effort the operator to set.

Highly Durable Drive Axle with Wet Disc Brakes

The planetary reduction drive axle smoothly delivers desired torque to the drive wheels. The wet disc brake system is virtually maintenance free and the enclosed design protects from dust and water.



■ Some of the photos may include optional equipment.

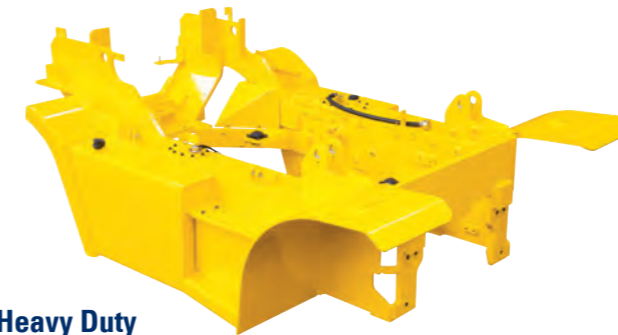
OPSS (Operator Presence Sensing System)

When operator is not in seat the hydraulic lift and tilt controls and travel are locked out.



Large Footboard & Hand Grip

Wide "open" step offers convenience and safety when entering and exiting truck.



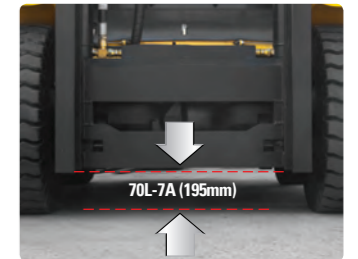
Heavy Duty Single Unit Frame

Heavy duty single unit type frame, designed on the basis of accurate structural analysis, guarantees durability and safety.



Bright, Protected Headlights

Bright, Protected head lights are positioned for exceptional visibility.



Ground Clearance

The engine and transmission are assembled horizontally and positioned high in the frame to protect major components during operation on rugged surface.