



70L-7A

15,500 lbs. Capacity · LP · Pneumatic Tire

HYUNDAI
MATERIAL HANDLING
NO ONE DELIVERS MORE

Beyond the Limits

The 70L-7A is Hyundai's largest capacity LP forklift and is engineered to deliver outstanding power and performance to make your business more productive and profitable.

Greater Power for Greater Productivity

Smooth running, efficient, and ergonomically designed, the 79L-7A is engineered to meet your needs and exceed your expectations

78kW/2,300rpm

Powerful PSI 4.3L Engine

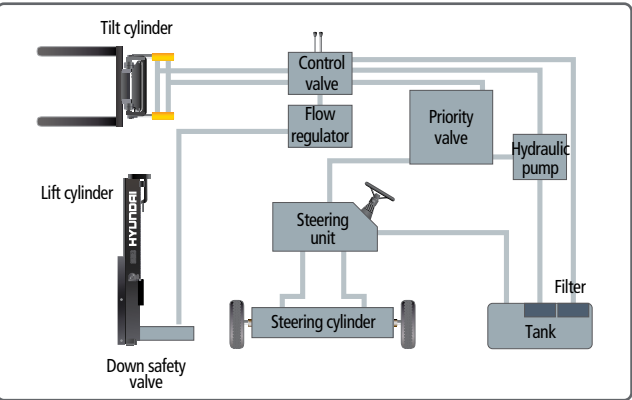
The proven quality of the PSI 4.3L engine ensures unbeatable performance, durability, and efficiency, while enhancing the value of the machine itself. Powerful and efficient, the engine offers excellent fuel economy, outstanding torque and is EPA/ CARB Tier-IV Certified.

Fast and Stable Performance

Being able to quickly raise and lower the mast, as well as tilt it forward and backward, provides the best operational conditions during unloading. When the truck is fully loaded, mast lowering speed is carefully controlled to ensure safety by the down control valve. Mast(Lift and Tilt) Look System is standard.



■ Some of the photos may include optional equipment.



State-of-the-Art Hydraulic System

The advanced large-capacity hydraulic system reacts quickly during operation, and a low-noise control valve increases both efficiency and durability.



Fully Hydrostatic Power Steering

A hydraulic steering system always guarantees smooth and flexible steering, preventing overrun and kick-back.



Increased Mast Tilting Angle

Utilizing the mast tilting angle of 15 degrees forward and 10 degrees backward, the operator can safely and rapidly perform loading and unloading jobs.

Faster Travel Speed & Better Gradability

The powerful high-output engine provides greater acceleration, better gradability and faster travel speed on any tough terrains or slopes.

Gradability(Loaded)	Travel Speed (Unloaded)
70L-7A: 40.6%	70L-7A: 14 mph





Operator Friendly Compartment Design

A design based on human engineering relieves fatigue and increases operator’s efficiency.

Operator Friendly Gauges and Water-resistant Monitor Panel

1 Parking brake lamp
2 Turn lamp
3 Engine oil warning lamp
4 Transmission oil temperature warning lamp
5 Battery charging warning lamp
6 Air cleaner filter warning light
7 Working light indicator
8 Seat belt warning
9 Water temperature gauge
10 OPSS warning (option)
11 Hour meter
12 Engine check lamp
13 Brake oil warning lamp



Full Suspension Seat
Based on a human engineering design, the attractive and adjustable seat provides greater comfort, safety, and durability.



High Visibility For Safe Operation
The operator is able to work with increased safety and accuracy due to a wider view mast.



■ Some of the photos may include optional equipment.



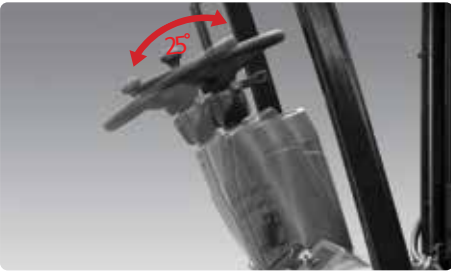
Ergonomically Positioned Pedals
Based on human engineering, the accelerator, brake and inching pedals are optimally positioned for convenience while operating the equipment.



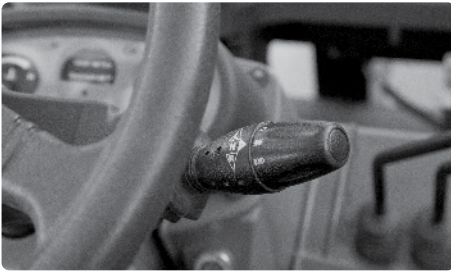
Cupholder & Console Box
Additional storage spaces are located inside the operating space for operator's convenience.



Quick Response Control Levers
Only minimal operator's effort is required for precise, safe and productive control.



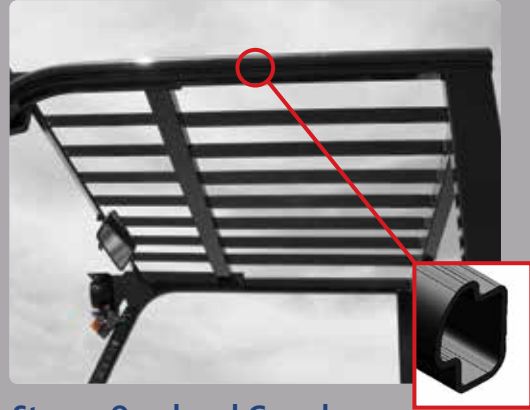
Adjustable Steering Wheel
Steering wheel with horn button can be adjusted by a lever on the right-hand side for the most comfortable operator position.



Easy and Safe Shift Lever
A single lever on the left side of the steering column gives the operator fast, easy control of direction. The lever must be in the neutral position before the engine can be started.

Rugged Durability To Safeguard Your Operation

The 70L-7A is engineered and built to deliver years of safe and reliable service in even the most challenging applications and harshest environments.



Strong Overhead Guard

The safety overhead guard meets ISO 6055 regulation and protects the operator during hazardous jobs.



Parking Brake

Ratchet type parking brake requires less effort the operator to set.

Highly Durable Split Type Drive Axle

The planetary reduction drive axle smoothly delivers desired torque to the drive wheels.



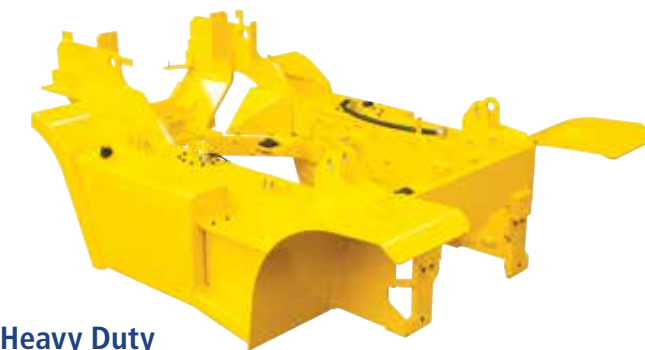
Operator Presence Sensing System (OPSS)

This system requires the operator to be present, in the seat, to have the use of the travel and hydraulic functions, including tilting, lifting, and lowering.



Large Footboard & Hand Grip

Wide open step offers convenience and safety when entering and exiting the truck.



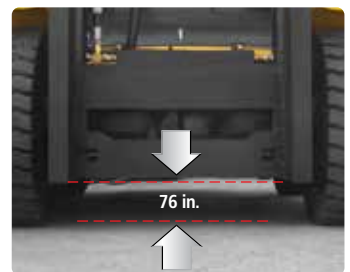
Heavy Duty Single Unit Frame

The heavy-duty single unit-type frame was designed employing the most structural analysis to guarantee durability and safety.



Bright, Protected Headlights

Bright, protected headlights are positioned for exceptional visibility.



Ground Clearance

The engine and transmission are assembled horizontally and positioned high in the frame to protect major components during operation on rugged surface.

Designed for Quick and Easy Service!

An ideal arrangement of component parts ensures easy access and convenience for maintenance.



Large Engine Hood
Highly accessible engine compartment assures fast and efficient maintenance.



Easy Change Air Cleaner
The air filter is readily accessible for cleaning or replacement.



Efficient, Reliable Cooling System



■ Some of the photos may include optional equipment.



Brake Fluid Reservoir with Level Switch
A warning lamp on the cluster is turned on if the brake oil level becomes lower than the required minimum level.



Easy Maintenance Oil Check
The T/M oil level can be checked easily without any disassembly.



Expansion Bellows
The expansion bellows absorbs vibration and reduces noise generated from the exhaust system and also extends the lifecycle of exhaust system.



Grease Fittings
Grease fittings are installed for fast access to steering axle center pin when doing your service checks.



Maintenance-Free Battery



Large Tool Box
Additional tool box located in machine side for operator's convenience.



Easy-to-Access Reservoir Tank



Wing Cover Locking System

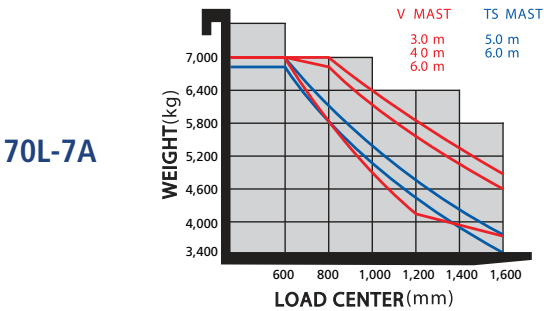
Mast Specification (70L-7A) STD : Hook Type Fork & Carriage

Model	Mast Type		Maximum Fork Height		Overall Height						Free Lift				Tilt Angle		Load Capacity w/o Side Shift At 24 in (600mm) LC		Load Capacity w/Side Shift At 24 in (600mm) LC			
					Lowered	Extended				Without Load Backrest		With Std Load Backrest										
						w/o Load Backrest		w/Std Load Backrest														
					in	mm	in	mm	in	mm	in	mm	in	mm	in	mm						
70L-7A	2-STAGE LIMITED FREE LIFT	V300	119	3,030	99	2,515	166	4,211	170.1	4,320	5.5	140	5.5	140	15	10	15,436	7,000	15,436	7,000	20,794	9,430
		V330	131	3,330	105	2,665	178	4,511	181.9	4,620	5.5	140	5.5	140	15	10	15,436	7,000	15,436	7,000	20,899	9,478
		V350	139	3,530	109	2,765	185	4,711	189.8	4,820	5.5	140	5.5	140	15	10	15,436	7,000	15,436	7,000	20,969	9,509
		V370	147	3,730	113	2,865	193	4,911	197.6	5,020	5.5	140	5.5	140	15	10	15,436	7,000	15,436	7,000	21,039	9,541
		V400	159	4,030	119	3,015	205	5,211	209.4	5,320	5.5	140	5.5	140	15	10	15,436	7,000	15,436	7,000	21,163	9,597
		V450	178	4,530	131	3,315	225	5,711	229.1	5,820	5.5	140	5.5	140	15	10	15,436	7,000	15,215	6,900	21,665	9,825
		V500	198	5,030	140	3,565	245	6,211	248.8	6,320	5.5	140	5.5	140	15	10	15,436	7,000	14,774	6,700	21,841	9,905
		V550	218	5,530	150	3,815	264	6,711	268.5	6,820	5.5	140	5.5	140	15	10	15,215	6,900	14,333	6,500	22,016	9,984
		V600	237	6,030	160	4,065	284	7,211	288.2	7,320	5.5	140	5.5	140	15	10	14,774	6,700	14,002	6,350	22,189	10,063
	3-STAGE FULL FREE LIFT	TF450	180	4,560	101	2,565	227	5,765	228.5	5,805	53.5	1,360	50	1,275	15	10	15,436	7,000	14,553	6,600	22,124	10,033
		TS450	180	4,560	101	2,565	227	5,765	228.5	5,805	53.5	1,360	50	1,275	15	10	15,436	7,000	14,553	6,600	22,124	10,033
		TS500	199	5,060	109	2,765	247	6,265	248.2	6,305	61.4	1,560	58	1,475	15	10	14,994	6,800	14,112	6,400	22,327	10,125
		TS560	220	5,600	117	2,965	268	6,805	269.5	6,845	69.3	1,760	66	1,675	15	10	14,553	6,600	13,671	6,200	22,572	10,236
		TS600	239	6,060	125	3,165	286	7,265	287.6	7,305	77.2	1,960	74	1,875	15	10	14,112	6,400	13,341	6,050	22,765	10,324
		TS730	289	7,330	144	3,665	336	8,535	337.6	8,575	96.9	2,460	94	2,375	15	10	12,679	5,750	11,687	5,300	23,338	10,584

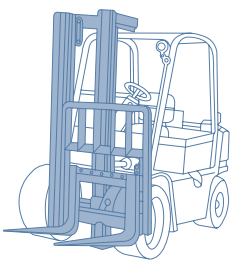
Mast Specification (70L-7A) OPT : Shaft Type Fork & Carriage

Model	Mast Type		Maximum Fork height		Overall Height						Free Lift				Tilt Angle		Load capacity w/o side shift At 24 in (600mm)LC		Load capacity w/side shift At 24 in (600mm) LC		TRUCK WEIGHT UNLOADED	
					Lowered		Extended				Without Load Backrest		With Std Load Backrest									
							W/o Load Backrest		W/Std Load Backrest													
			in	mm	in	mm	in	mm	in	mm	in	mm	in	mm	deg	deg	lb	kg	lb	kg	lb	kg
70L-7A	2-STAGE LIMITED FREE LIFT	V300	119	3,030	99	2,515	-	-	168.3	4,275	-	-	5.5	140	15	10	15,436	7,000	-	-	20,961	9,506
		V330	131	3,330	105	2,665	-	-	180.1	4,575	-	-	5.5	140	15	10	15,436	7,000	-	-	21,063	9,552
		V350	139	3,530	109	2,765	-	-	188.0	4,775	-	-	5.5	140	15	10	15,436	7,000	-	-	21,133	9,584
		V370	147	3,730	113	2,865	-	-	195.9	4,975	-	-	5.5	140	15	10	15,436	7,000	-	-	21,204	9,616
		V400	159	4,030	119	3,015	-	-	207.7	5,275	-	-	5.5	140	15	10	15,436	7,000	-	-	21,327	9,672
		V450	178	4,530	131	3,315	-	-	227.4	5,775	-	-	5.5	140	15	10	15,436	7,000	-	-	21,830	9,900
		V500	198	5,030	140	3,565	-	-	247.0	6,275	-	-	5.5	140	15	10	15,436	7,000	-	-	22,004	9,979
		V550	218	5,530	150	3,815	-	-	266.7	6,775	-	-	5.5	140	15	10	15,436	7,000	-	-	22,181	10,059
		V600	237	6,030	160	4,065	-	-	286.4	7,275	-	-	5.5	140	15	10	14,994	6,800	-	-	22,353	10,137
	3-STAGE FULL FREE LIFT	TF450	180	4,560	101	2,565	-	-	228.5	5,805	-	-	52	1,320	15	10	15,436	7,000	-	-	22,260	10,095
		TS450	180	4,560	101	2,565	-	-	228.5	5,805	-	-	52	1,320	15	10	15,436	7,000	-	-	22,260	10,095
		TS500	199	5,060	109	2,765	-	-	248.2	6,305	-	-	60	1,520	15	10	15,215	6,900	-	-	22,463	10,187
		TS560	220	5,600	117	2,965	-	-	269.5	6,845	-	-	68	1,720	15	10	14,774	6,700	-	-	22,708	10,298
		TS600	239	6,060	125	3,165	-	-	287.6	7,305	-	-	76	1,920	15	10	14,333	6,500	-	-	22,902	10,386
		TS730	289	7,330	144	3,665	-	-	337.6	8,575	-	-	97	2,460	15	10	12,679	5,750	-	-	23,475	10,646

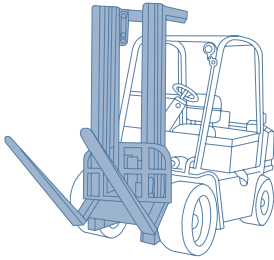
Load Capacity



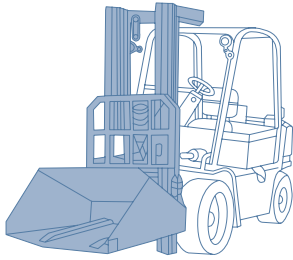
Various Attachments



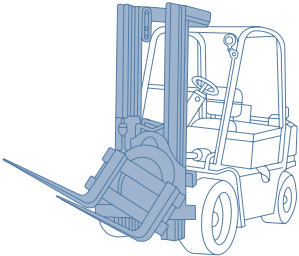
Side Shift



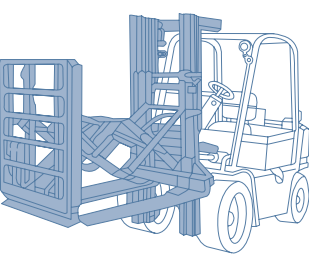
Hinged Fork



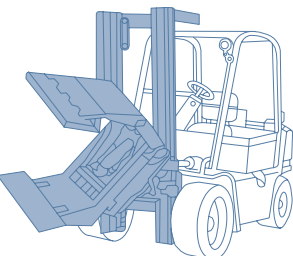
Hinged Bucket



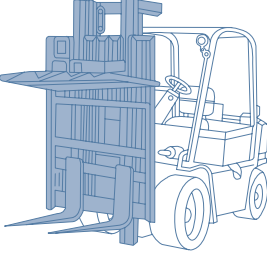
Rotating Fork



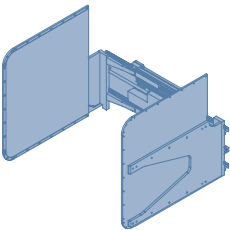
Push Pull



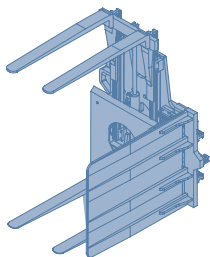
Rotating Roll Clamp



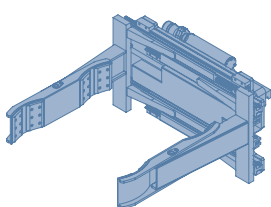
Load Stabilizer



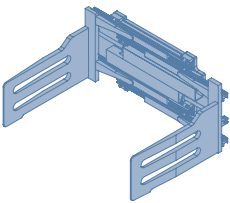
Carton Clamp



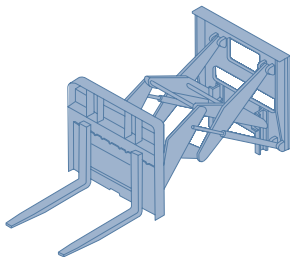
Pallet Invert



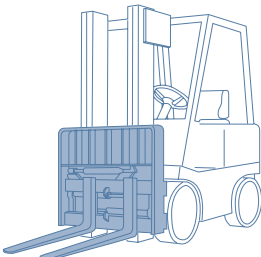
Drum Clamp



Bale Clamp



Load Extender



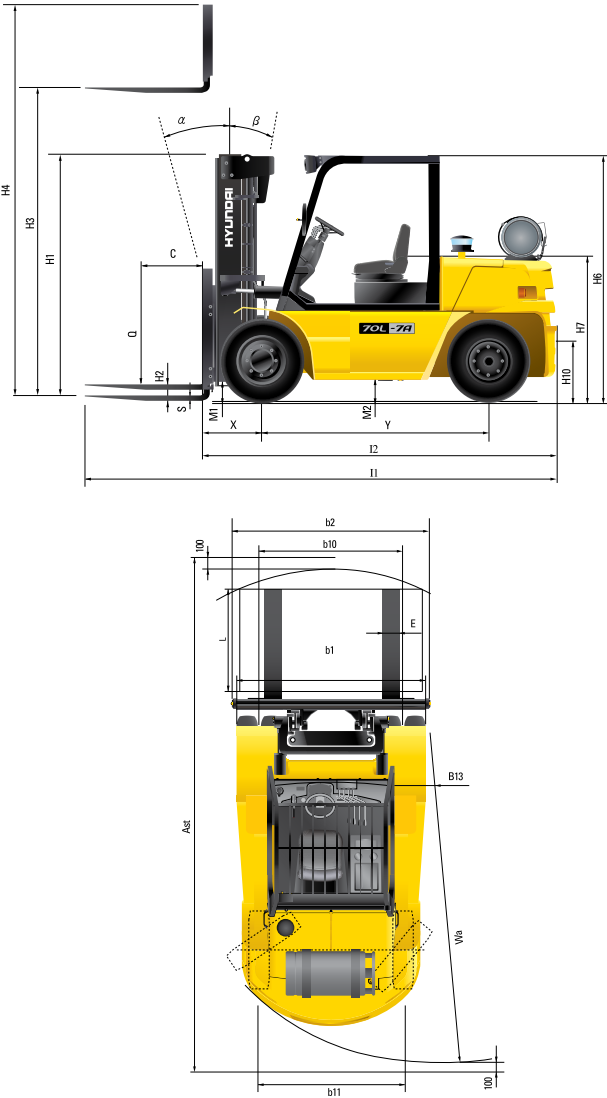
Fork Positioner

Optional Items

- **FORK (mm)** : 1200 (STD), 1350, 1500, 1800, 2000, 2300, 2400
- **TIRE** : SOLID (SUPERELASTIC), NON-MARKING
- **SEAT** : SEAT BELT, ARM REST
- **INTERNAL PIPING**
- **CABIN & HEATER**
- **MUFFLER** : HORIZONTAL
- **LPG TANK CLAMP** : DUAL
- **MASTER SWITCH**
- **ELE. BEACON**
- **HAZARD SWITCH**
- **MCV** : 3-SPOOL / 4-SPOOL / 5-SPOOL
- **SIDE SHIFT**
- **INTEGRAL FORK POSITIONER CARRIAGE**
- **INTEGRAL SIDE SHIFT CARRIAGE**
- **INTEGRAL S/S WITH F/P CARRIAGE**

※ The options in this brochure are subject to change to improve the performance of the forklift.

Dimensions



Specifications

Identification		
1.1	Manufacturer	Hyundai
1.2	Manufacturer's type designation	70L-7A
1.3	Drive: electric (battery or mains), diesel, petrol, fuel gas, manual	LP
1.4	Type of operation: hand, pedestrian, standing, seated, order-picker	seated
1.5	Load capacity / rated load	Q (kg) 7,000
1.6	Load center distance	c (mm) 600
1.8	Load distance, center of drive axle to fork	x (mm) 615
1.9	Wheelbase	y (mm) 2,300
Weights		
2.1	Service weight	kg 9,430
2.2	Axle loading, loaded front/rear	kg 14,564 / 1,866
2.3	Axle loading, unloaded front/rear	kg 3,867 / 5,564
Wheels, Chassis		
3.1	Tires: solid rubber, superplastic, pneumatic, polyurethane	Pneumatic
3.2	Tires size, front	8.25-15-14PR
3.3	Tires size, rear	8.25-15-14PR
3.5	Wheels, number front x rear (x=driven wheels)	4x2
3.6	Track width, front	b10 (mm) 1,578
3.7	Track width, rear	b11 (mm) 1,604
Basic Dimensions		
4.1	Mast / fork carriage tilt forward / backward (α / β)	degrees 15 / 10
4.2	Lowered mast height	h1 (mm) 2,515
4.3	Free lift	h2 (mm) 140
4.4	Lift height	h3 (mm) 3,030
4.5	Extended mast height	h4 (mm) 4,320
4.7	Overhead guard (cab) height	h5 (mm) 2,533
4.8	Seat height / standing height	h7 (mm) 1,455
4.12	Coupling height	h10 (mm) 511
4.19	Overall length	l1 (mm) 4,820
4.20	Length to face of forks	l2 (mm) 3,680
4.21	Overall width	b1 (mm) 2,088
4.22	Fork dimensions	s / e / l (mm) 65 x 150 x 1,200
4.23	Fork carriage ISO 2328, class / type A,B	Class IV
4.24	Fork-carriage width	b12 (mm) 2,068
4.31	Ground clearance, loaded, under mast	m1 (mm) 195
4.32	Ground clearance, center of wheelbase	m2 (mm) 206
4341	Aisle width for pallets 1000x1200 crossways	Ast (mm) 5,185
4342	Aisle width for pallets 800x1200 lengthways	Ast (mm) 5,385
4.35	Turning radius	Wa (mm) 3,370
4.36	Smallest pivot point distance	b13 (mm) 1,224
Performance Data		
5.1	Travel speed, Unloaded	km/h 22.4
5.2	Lift speed, Loaded/Unloaded	mm/s 420 / 430
5.3	Lowering speed, Loaded/Unloaded	mm/s 500 / 450
5.6	Max. Drawbar pull, Loaded	N 67,302
5.8	Max. Gradeability, Loaded	% 40.6
5.10	Service brake	Hydraulic
Engine		
7.1	Engine manufacturer / type	PSI 4.3L
7.2	Engine power acc. to ISO 1585	kW/rpm 78 / 2,300
7.3	Maximum torque	kgf-m/rpm 34 / 1,400
7.4	No. of cylinders / cubic capacity	/cm3 6 / 4,294
Other Details		
8.1	Type of drive control	Power Shift
8.2	Operating pressure, system / attachments	bar 185 / 150
8.3	Oil volume for attachments	ℓ / min 76
8.4	Sound level at the driver's ear according to DIN 12053	dB(A) 82

※ The specifications in this brochure are subject to change.

MEMO

**NO ONE
DELIVERS MORE**



6100 Atlantic Blvd.
Norcross, GA 30071
hyundaimaterialhandling.com

678-823-7777

07.2025